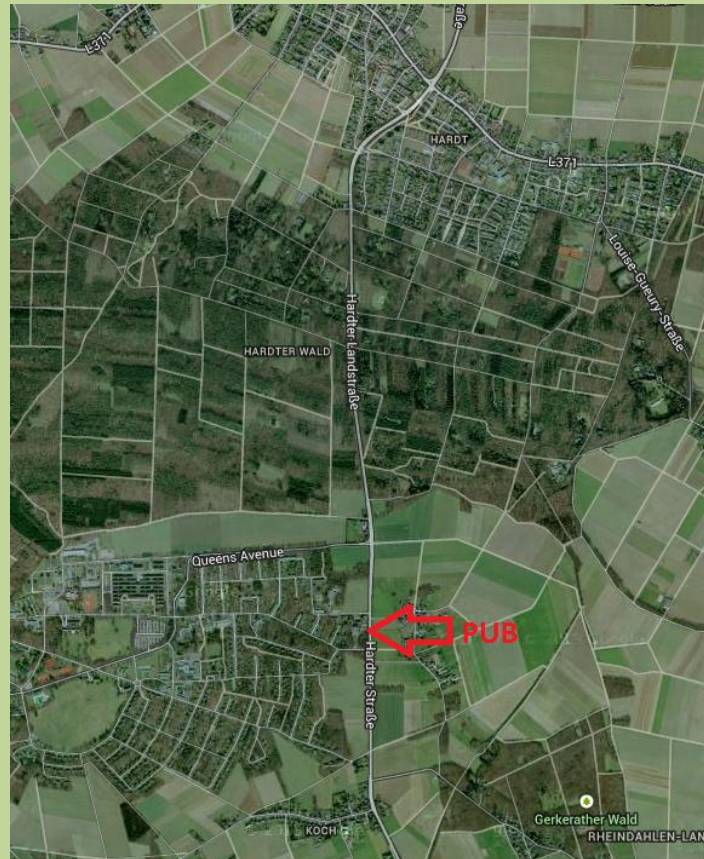


A NEW INAUGURATION OF A BRITISH PUB

- A new pub near the main road with an old English architecture but modern too.
- 10 minutes from Rheindahlen and 5 minutes from Hardt by car.
- With a bus station near the pub and extra buses for the night.
- Private big parking for the clients.

Big free inauguration with cocktail, beer, open air, music, typical English sports and more....



EVERYONE IS WELCOME!